

SILLA

A Reliable Partner



Contents

1. Who We Are

- 6p Message from Leadership
- 8p History
- 10p SILLA SPIRIT
- 12p Social Contribution

2. What We Do

- 14p Business Overview
- 16p Food Resources
- 22p Industrial Resources
- 26p Service Resources

**CONNECTING RESOURCES
SHAPING THE FUTURE**

01

Who We Are





A Legacy of Challenge and Pioneering Spirit, Enduring Values

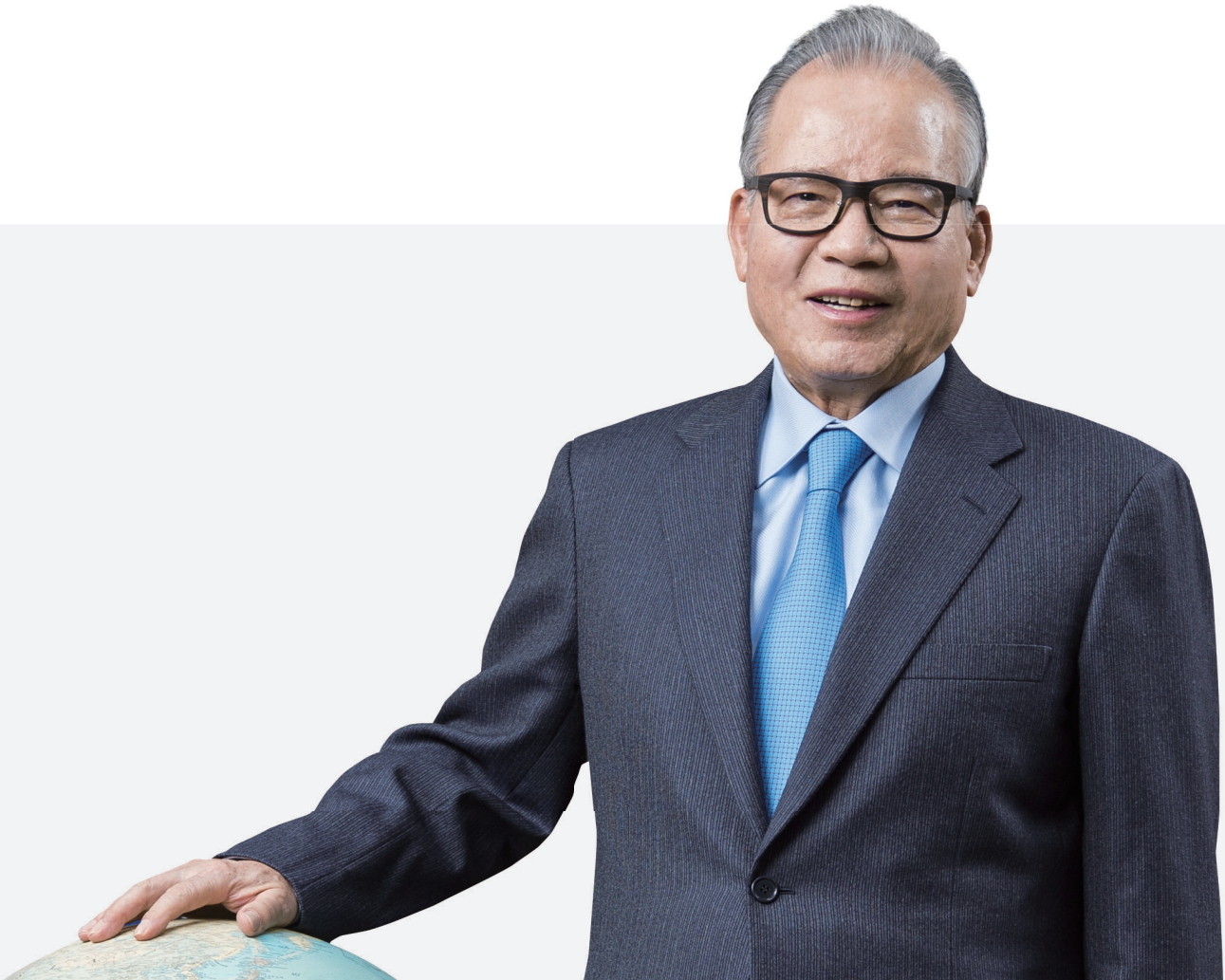
We have grown by choosing new challenges rather than following familiar paths. We ventured into uncharted waters to pioneer deep-sea fishing and expanded our business into steel distribution and services, strengthening our corporate foundation.

Principled management is based on integrity and strong values. Trust and collaboration are the foundation of our corporate culture. We value our responsibility to contribute to society.

This is the path SILLA has taken, and these are the values we will continue to uphold.

Park, Joon-Hyung

Chairman



Connecting Resources, Shaping the Future

For the past half-century, SILLA Group has enriched global food culture and played an essential role in ensuring the stable supply of essential resources for national infrastructure development.

Moving forward, we will continue to enhance value based on trust and expertise, shaping a better future.

Park, Sung-Jin

Vice Chairman



1960s

- Mar. 1967 Founding of SILLA by Chairman Park, Joon-Hyung
- Dec. 1969 SILLA recorded USD 1.05 million in fiber exports

1970s

- Nov. 1971 Newly constructed the Hanilho, the first vessel of SILLA
- Jun. 1976 SILLA listed on KOSPI
- Aug. 1977 Established SILLA SG
- Oct. 1977 Established WONIL SPECIAL STEEL
- Mar. 1978 Established SILLA CULTURE SCHOLARSHIP FOUNDATION

1980s

- Sep. 1987 Established SILLA ENGINEERING
- Nov. 1987 SILLA awarded Silver Tower Order of Industrial Service Merit on Trade Day
- Nov. 1987 SILLA awarded the USD 50 million export tower
- Apr. 1988 Moved the SILLA head office to a new building in Seokchon-dong
- Jun. 1988 SILLA began longline fishing of deep sea tuna
- Jul. 1988 Established VISION HILLS

1990s



- Mar. 1990 SILLA began purse seine fishing of deep sea tuna
- Jun. 1994 WONIL SPECIAL STEEL listed on KOSDAQ
- Jun. 1995 SILLA SG listed on KOSDAQ
- Jan. 1999 SILLA ENGINEERING began exporting dies to Europe

2000s



- Sep. 2002 Established PANOFI
- Nov. 2002 Completed construction of WONIL SPECIAL STEEL Sihwa plant
- Sep. 2005 Moved Busan plant of WONIL SPECIAL STEEL to a larger facility
- Jul. 2009 Established KWANGJANG AUTOMOTIVE

2010s



- Jul. 2011 Established COSMO
- Jul. 2011 Established KIRIKORE
- May 2012 Completed construction of SILLA ENGINEERING Asan plant
- Dec. 2013 Established IZVALTA
- Apr. 2014 Established GMTS
- Apr. 2014 Established SILLA HOLDINGS
- Dec. 2014 SILLA ENGINEERING awarded the USD 50 Million Export Tower
- Feb. 2016 SILLA SG acquired DONGPYO
- Aug. 2016 Completed construction of WONIL SPECIAL STEEL Jincheon plant
- Mar. 2017 Proclaimed SILLA GROUP (50th anniversary of founding)
- Sep. 2018 Established NFDC
- Nov. 2018 Completed construction of WONIL SPECIAL STEEL Miryang plant
- Jun. 2019 SILLA acquired DONGHWA FRESH PRODUCE
- Nov. 2019 WONIL SPECIAL STEEL acquired HAEWON FORGING

2020s



- Jul. 2020 Established WONIL STEEL VINA
- Sep. 2021 WONIL SPECIAL STEEL acquired BM STEEL Co., Ltd.
- Nov. 2021 Established NLC
- Oct. 2022 Completed construction and relocated to the Godeok office building

Aspiration



SILLA Group connects resources and value to contribute to human happiness and customer prosperity.

Slogan



CONNECTING RESOURCES, SHAPING THE FUTURE

Business Objectives



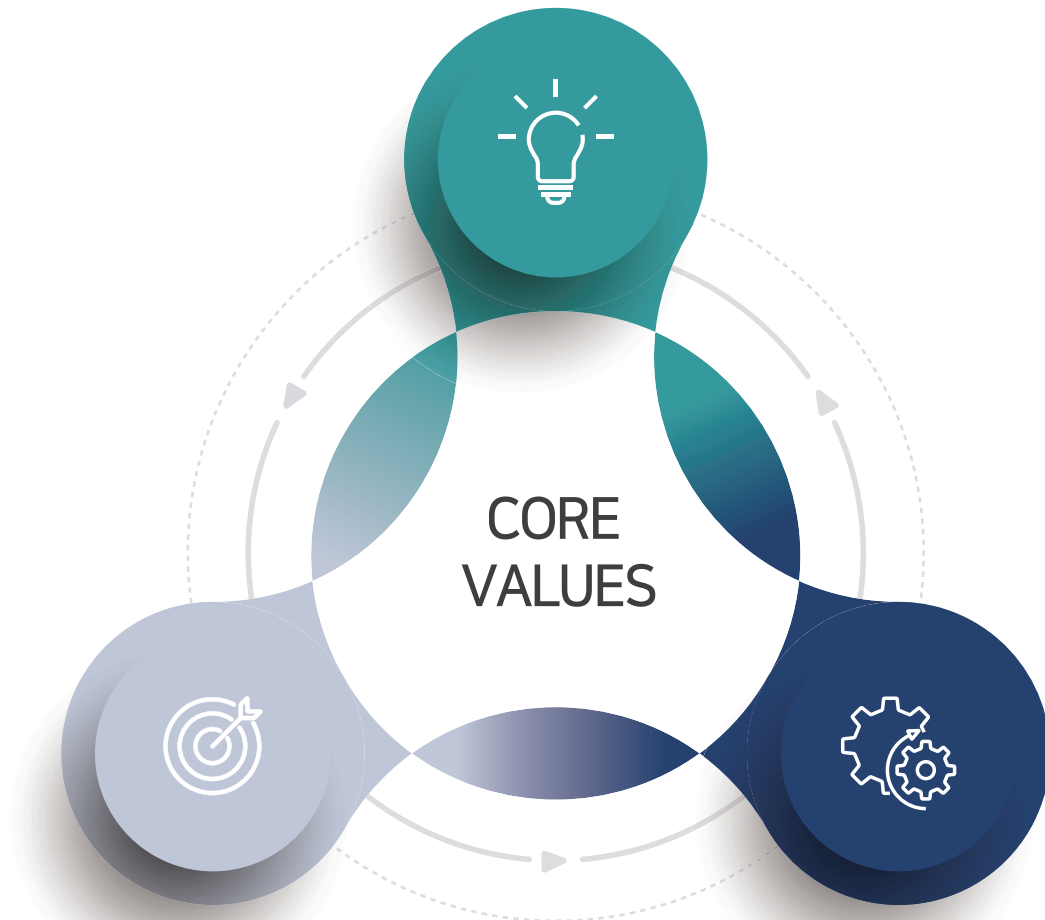
An innovative leader in the fields of food, industry, and service resources.

Creating high added value through enhanced processing and distribution capabilities.

Fulfilling our social responsibility as a stable supplier of essential resources.

Challenges & Creative

SILLA's history is one of challenges.
We strive to think outside the box
and seek new methods.



Internal stability & Principles

We focus more on what's inside
than out, and our management is
based on the basic
fundamentals and principle.

Trust & Co-prosperity

We place our faith in people and
grow alongside them to
contribute to the
society and the nations.

Social Contribution

We fulfill our commitment to social responsibility by regularly organizing volunteer activities with underprivileged communities, fostering a culture of sharing and mutual growth.



Social Contribution

SILLA CULTURAL SCHOLARSHIP FOUNDATION

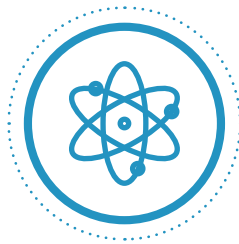
SILLA CULTURAL SCHOLARSHIP FOUNDATION has supported approximately 5,000 students contributing to the development of future leaders.



Financial support



Accumulated
scholarship payment
KRW : 33,192,938,710



Research funding support
KRW : 234,400,000



Event support
KRW : 1,105,098,691

02 What We Do

Food Resources

Deep-Sea Fishing
Food Manufacturing · Distribution
Agricultural Product Auction · Distribution

Industrial Resources

Special Steel processing · Distribution
Press Die Manufacturing
Mold Base Manufacturing
Automotive Parts Manufacturing
Marine Engine Parts Manufacturing

Service Resources

Membership Golf Club
Imported Car Sales · Service





Food Resources



SILLA



SILLA is the founding company of the group and a global seafood specialist with a half-century legacy in trade and deep-sea fishing. It currently operates 17 tuna purse seiners, 9 longliners, and 1 transporter.

Overseas Joint Venture



PANOFI



KIRIKORE



NFDC



TARAWA SHIPYARD



IZVALTA



GMTS

Food Resources

SILLA SG



SILLA SG is a specialized food manufacturing company with half century of industry experience. In 2024, it launched the "ALLISILLA" brand to provide consumers with fresh and reliable food products.

COSMO



COSMO is the largest canned tuna manufacturer in West Africa, located in Tema, Ghana. It produces canned tuna for renowned European brands through an OEM model, using fresh tuna caught by its affiliate, PANOFI.

DONGHWA FRESH PRODUCE



DONGHWA FRESH PRODUCE is a Seoul-designated wholesale market corporation specializing in agricultural distribution, sourcing fresh produce directly from farms and selling it through auctions.

NLC



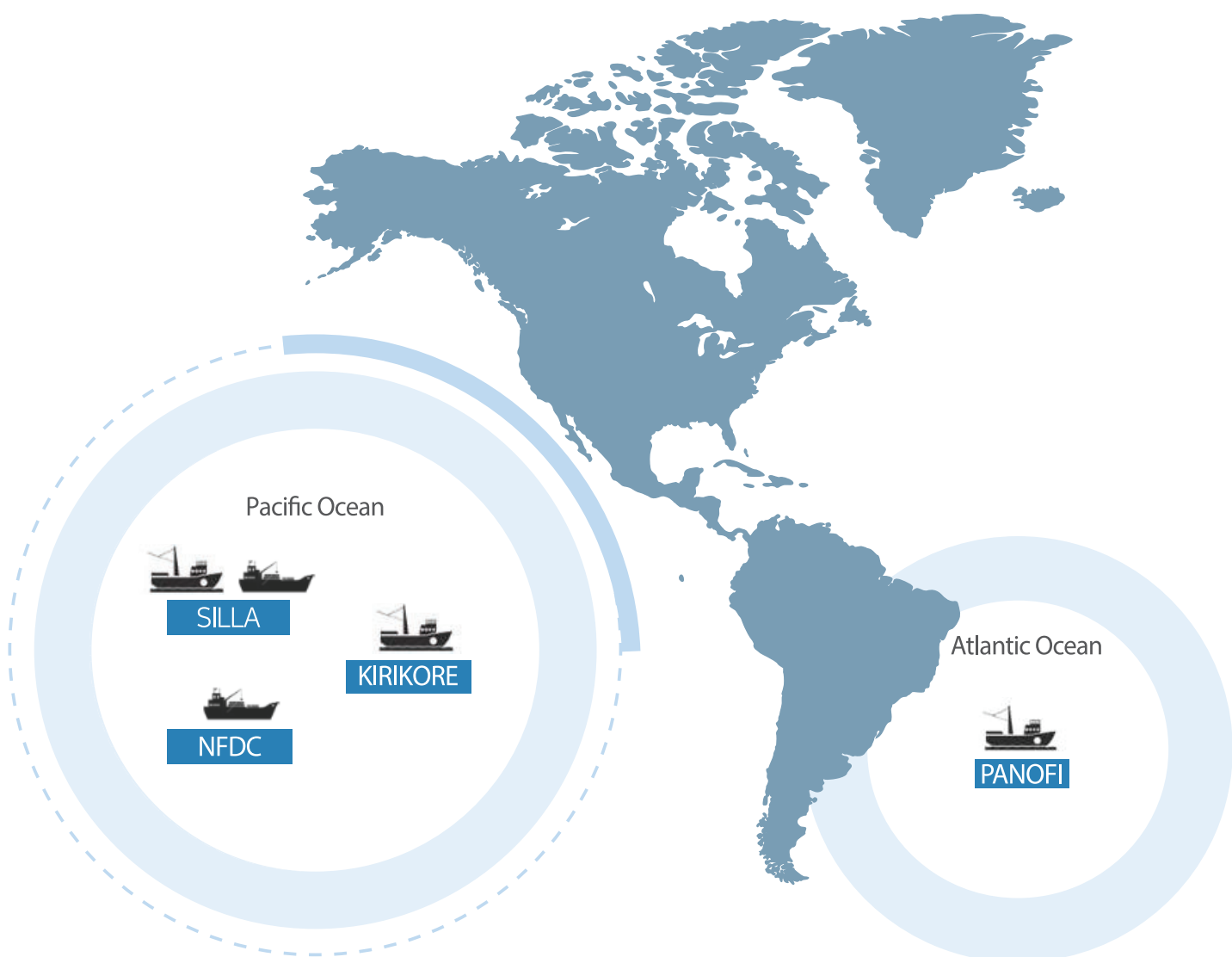
NLC, the master franchisee of Popeyes in Korea, enhances brand competitiveness in the domestic fast-food market by leveraging its differentiated services and operational expertise.


We introduce you our deep sea fishery fleet, which works hard to catch fish in the rough seas



Type of vessel	SIIA	PANOFI	KIRIKORE	NFDC	Total
Tuna purse seiners	6	7	2	2	17
Tuna Longliners	9				9
Transporters		1			1
Pollock trawlers					1
					27

* Including joint operating vessels





What We Do

Industrial Resources



Industrial Resources

WONIL SPECIAL STEEL



WONIL SPECIAL STEEL has become a top specialty steel distributor and processor in Korea through continuous innovation. With a nationwide network, it supplies high-quality specialty steel to various industries.

Products



Tool Steel



Die Steel



Structural Steel



Board Materials

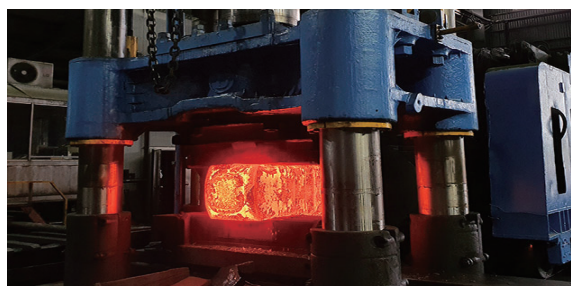
BM STEEL



BM STEEL precisely cuts and processes steel raw materials into an optimized form for automotive shaft production and supplies them to parts manufacturers.



HAEWON FORGING



HAEWON FORGING manufactures key marine engine parts with advanced forging techniques, serving as a trusted partner to global shipbuilders.

WONIL STEEL VINA



WONIL STEEL VINA, a Vietnam-based subsidiary of WONIL SPECIAL STEEL, processes and supplies high-quality specialty steel across Vietnam.

Industrial Resources

SILLA ENGINEERING



SILLA ENGINEERING manufactures exterior panel molds and mold bases for injection molding. With precision technology and an innovative production system, we provide optimal molding solutions across various industries.

Facility Overview

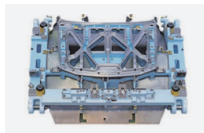


Products

· Press Die



Side Outer



Hood



Tail Gate



Door

· Mold Base



Service Resources

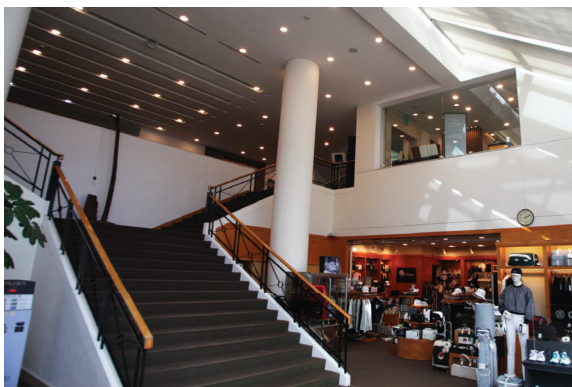


Service Resources

VISION HILLS



VISION HILLS is a prestigious membership golf club with strategically designed courses that embrace the natural landscape and offer excellent accessibility. Ideally located near central Seoul, it provides a refined golfing experience with meticulous course management, ensuring optimal playing conditions for its distinguished members.



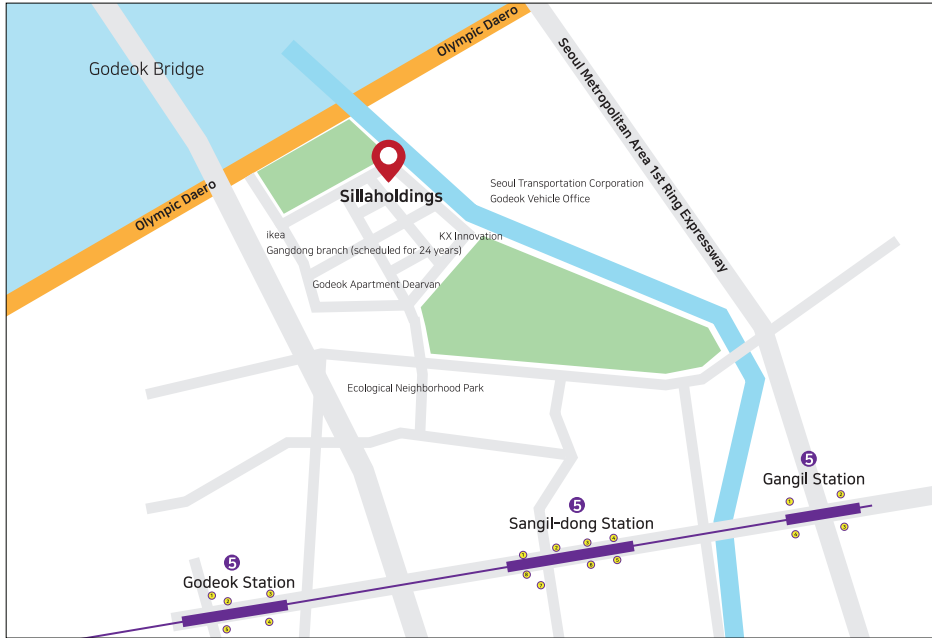
Service Resources

KWANGJANG AUTOMOTIVE



KWANGJANG AUTOMOTIVE, the official dealer of Toyota Korea, operates a sales and servicing network across Bundang, Suwon, Dongtan, and Wonju. With professional service and meticulous customer care, it provides an exceptional vehicle purchasing and servicing experience.





Company name	Sillaholdings Co., Ltd.
Address	30 Godeokbizvalley-ro 6-gil, Gangdong-gu, Seoul, 05203, Republic of Korea
Telephone	TEL +82-2-2203-8700 FAX +82-2-2203-8701
E - mail	sillaholdings@sla.co.kr
W E B	www.sillaholdings.com

Contact Information

Social Contribution

SILLA CULTURAL & SCHOLARSHIP FOUNDATION

362, Baekjegobun-ro, Songpa-gu, Seoul, 8F (SILLA Building)
Tel: +82-2-413-0795 / Fax: +82-2-418-4467

Food Resources

SILLA

(Head Office)

30, Godeokbizvalley-ro 6-gil, Gangdong-gu, Seoul, 15F
Tel: +82-2-2142-7360 / Fax: +82-2-416-0773

(Busan Branch)

66, Jungang-daero, Jung-gu, Busan
Tel: +82-51-663-3200 / Fax: +82-51-663-3100

SILLA SG

(Head Office)

30, Godeokbizvalley-ro 6-gil, Gangdong-gu, Seoul, 15F
Tel: +82-2-2142-7360 / Fax: +82-2-416-0773

(Busan Plant)

1414, Nakdong-daero, Sasang-gu, Busan
Tel: +82-51-302-3811 / Fax: +82-51-304-1369

DONGHWA FRESH PRODUCE

932, Yangjae-daero, Songpa-gu, Seoul
Tel: +82-2-3435-7000 / Fax: +82-2-3435-7009

NLC

362, Baekjegobun-ro, Songpa-gu, Seoul, 5F
Tel: +82-2-424-1750 / Fax: +82-2-424-1752

Industrial Resources

WONIL SPECIAL STEEL

(Head Office)

4, Gongdan 2-daero 256beon-gil, Siheung-si, Gyeonggi-do
Tel: +82-31-434-1221 / Fax: +82-31-434-1331

(Miryang Plant)

34, Paseo Jungang-gil, Hanam-eup, Miryang-si,
Gyeongsangnam-do
Tel: +82-55-391-5500 / Fax: +82-55-391-1100

(Jincheon Plant)

43-29, Sincheok Sandan 1-ro, Deoksan-eup, Jincheon-gun, Chungcheongbuk-do
Tel: +82-43-534-3600 / Fax: +82-43-534-3609

SILLA ENGINEERING

271, Asan Valley-ro, Dunpo-myeon, Asan-si, Chungcheongnam-do
Tel: +82-41-422-2000 / Fax: +82-41-422-2030

BM STEEL

17-5, Wollim-ro, Seongsan-gu, Changwon-si, Gyeongsangnam-do
Tel: +82-55-264-3822 / Fax: +82-55-264-3826

HAEWON FORGING

16, Gimhae-daero 1099beon-gil, Hallim-myeon, Gimhae-si, Gyeongsangnam-do
Tel: +82-55-343-2355 / Fax: +82-55-343-2366

Service Resources

GWANGJANG AUTOMOTIVE

(Bundang Showroom & Service Center)

59, Saemaeul-ro, Bundang-gu, Seongnam-si, Gyeonggi-do
Tel: 1577-9811 / Fax: +82-31-780-6620

(Suwon Showroom & Service Center)

321, Jungbu-daero, Giheung-gu, Yongin-si, Gyeonggi-do
Tel: +82-31-780-6677 / Fax: +82-31-204-9811

(Wonju Showroom & Service Center)

432, Seowon-daero, Wonju-si, Gangwon-do
Tel: +82-33-766-9611 / Fax: +82-33-766-9612

(Dongtan Service Center)

13, Busandong-gil, Osan-si, Gyeonggi-do
Tel: +82-31-780-6650

VISION HILLS

226-220, Machi-ro, Hwado-eup, Namyangju-si, Gyeonggi-do
Tel: +82-31-595-3355 / Fax: +82-31-595-0707

